

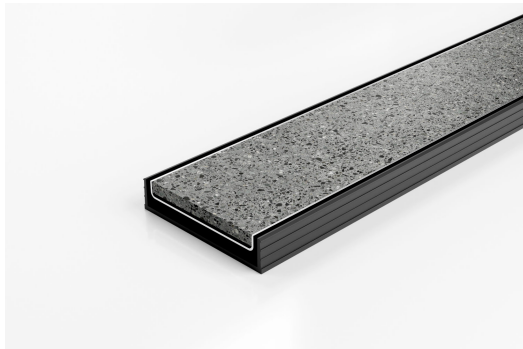


ARCHITECTURAL
GRATES + DRAINS



100TiGBL20

Tile Insert Drain



The 100TiG20 is a modular drainage system with a stainless steel tile insert and a Black uPVC channel and fittings.

The 100Tii20 is a Tile Insert Drain manufactured from 1.5mm thick 316 marine grade stainless steel.

Suitable for tiles up to 10mm thick.

Black uPVC channel only suitable for Internal use only

Code 100TiGBL20

Range 100

Grate Style Ti

Category Modular Kits

Channel Material uPVC

Steel Grade 316

SPECIFICATIONS + DIMENSIONS

Channel Width	106mm					
Channel Depth	23mm					
Length(s)	1000mm	1200mm	1500mm	1800mm	2000mm	2400mm
	2700mm	3000mm				
Outlet Size	DN80, DN100					

STORMTECH COLOUR FINISHES



Electroplate finishes subject to natural variation with time and local environment. Factors such as pools/surf beaches may require electropolishing. Contact us for suitability.



Grates longer than 1500mm supplied in sections. Tile Inserts longer than 1200mm supplied in sections. Channels over 3000mm supplied in sections with joiner. +/-2mm tolerance on dimensions.

PRODUCT APPLICATIONS

- Bathroom Drainage
- Wet Area Drainage
- Aged / Health Care Drainage
- Hospitality Drainage
- Shower Drainage
- Multi-Residential Drainage
- Special Needs Drainage

Copyright © Stormtech Pty Ltd. Patent 733361. Drawings not to scale, please use dimensions shown. Downloaded 22/04/2026 (please check for updates)



Visit stormtech.com.au
for tools + inspiration.

Phone **1300 653 403**

Email info@stormtech.com.au