

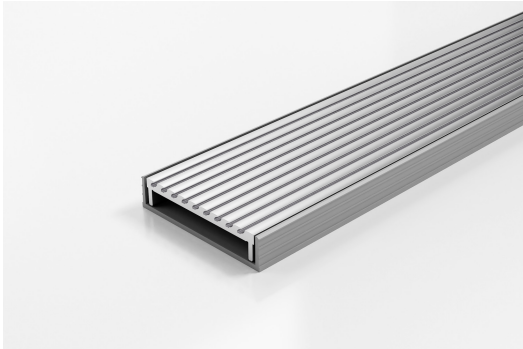


ARCHITECTURAL  
GRATES + DRAINS



# 100AAG20

## Linear Drain



The 100AAG20 features a unique, all Aluminium Wave grate design.

Made in Australia from high grade, locally sourced and anodised Aluminium.

Modular site finished linear drainage system features all Aluminium Wave grate combined with a uPVC channel.

**Code** 100AAG20

**Range** 100

**Grate Style** AA

**Category** Modular Kits

**Channel Material** uPVC

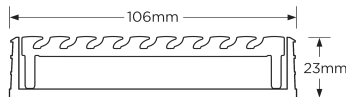
### SPECIFICATIONS + DIMENSIONS

<b>Channel Width</b>	106mm
<b>Channel Depth</b>	23mm
<b>Length(s)</b>	900mm 1000mm 1200mm 1500mm 1800mm 2000mm 2200mm 2400mm 2700mm 3000mm
<b>Outlet Size</b>	DN40, DN50, DN80, DN100

### STORMTECH COLOUR FINISHES



Electroplate finishes subject to natural variation with time and local environment. Factors such as pools/surf beaches may require electropolishing. Contact us for suitability.



Grates longer than 1500mm supplied in sections. Tile Inserts longer than 1200mm supplied in sections. Channels over 3000mm supplied in sections with joiner. +/-2mm tolerance on dimensions.

### PRODUCT APPLICATIONS

- |                             |                            |
|-----------------------------|----------------------------|
| Bathroom Drainage           | Hospitality Drainage       |
| Aged / Health Care Drainage | Paved Area Drainage        |
| Balcony Drainage            | Shower Drainage            |
| Commercial Drainage         | Multi-Residential Drainage |
| Courtyard / Patio Drainage  | Special Needs Drainage     |
| Pool and Spa Area Drainage  | Threshold Drainage         |

Copyright © Stormtech Pty Ltd. Patent 733361. Drawings not to scale, please use dimensions shown. Downloaded 18/04/2026 (please check for updates)



Visit [stormtech.com.au](http://stormtech.com.au)  
for tools + inspiration.

Phone **1300 653 403**

Email [info@stormtech.com.au](mailto:info@stormtech.com.au)