

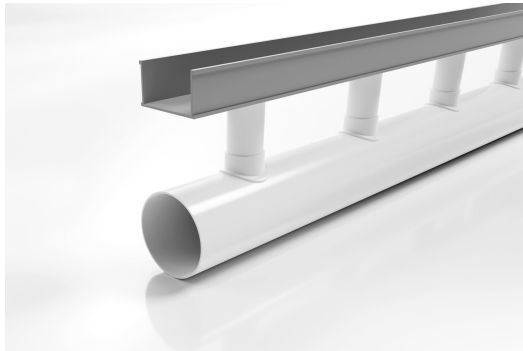


ARCHITECTURAL
GRATES + DRAINS



65G90

Linear Drain



Developed for high capacity drainage needs, providing flexibility in landscape and pool design.

90mm Drainpipe with 65G UPVC Channel.

A 65mm wide UPVC channel is connected via downpipes at 200mm intervals to sockets in a 90mm drain below.

This allows the channel to be installed level while the drainpipe is given sufficient fall to be self-cleaning.

The Special Assembly is then completed with a stainless steel grate from the AR, TR or PS series.

Please be aware that depending on the installation environment, for a pool installation or close to a surf beach, you may need to have your stainless steel grates electropolished.

This unique drainage system was recognised for its innovation by a DesignMark at the Australian International Design Awards.

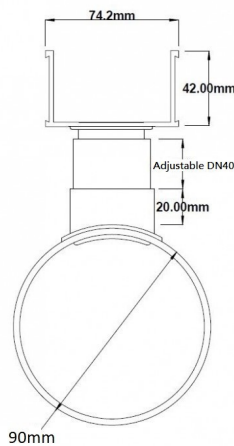
Please note stainless steel grates to complement this system are separate items

Code 65G90

Range Special Assembly

Category Modular Kits

Channel Material uPVC



Grates longer than 1500mm supplied in sections. Tile Inserts longer than 1200mm supplied in sections. Channels over 3000mm supplied in sections with joiner. +/-2mm tolerance on dimensions.

SPECIFICATIONS + DIMENSIONS

Channel Width	74mm
Channel Depth	42mm
Length(s)	3000mm
Outlet Size	N/A

PRODUCT APPLICATIONS

Aged / Health Care Drainage
Balcony Drainage
Commercial Drainage
Courtyard / Patio Drainage
Driveway Drainage
Pool and Spa Area Drainage

Paved Area Drainage
Special Needs Drainage
Suspended Slab Drainage

Copyright © Stormtech Pty Ltd. Patent 733361. Drawings not to scale, please use dimensions shown. Downloaded 18/04/2026 (please check for updates)



Visit stormtech.com.au
for tools + inspiration.

Phone **1300 653 403**

Email info@stormtech.com.au